

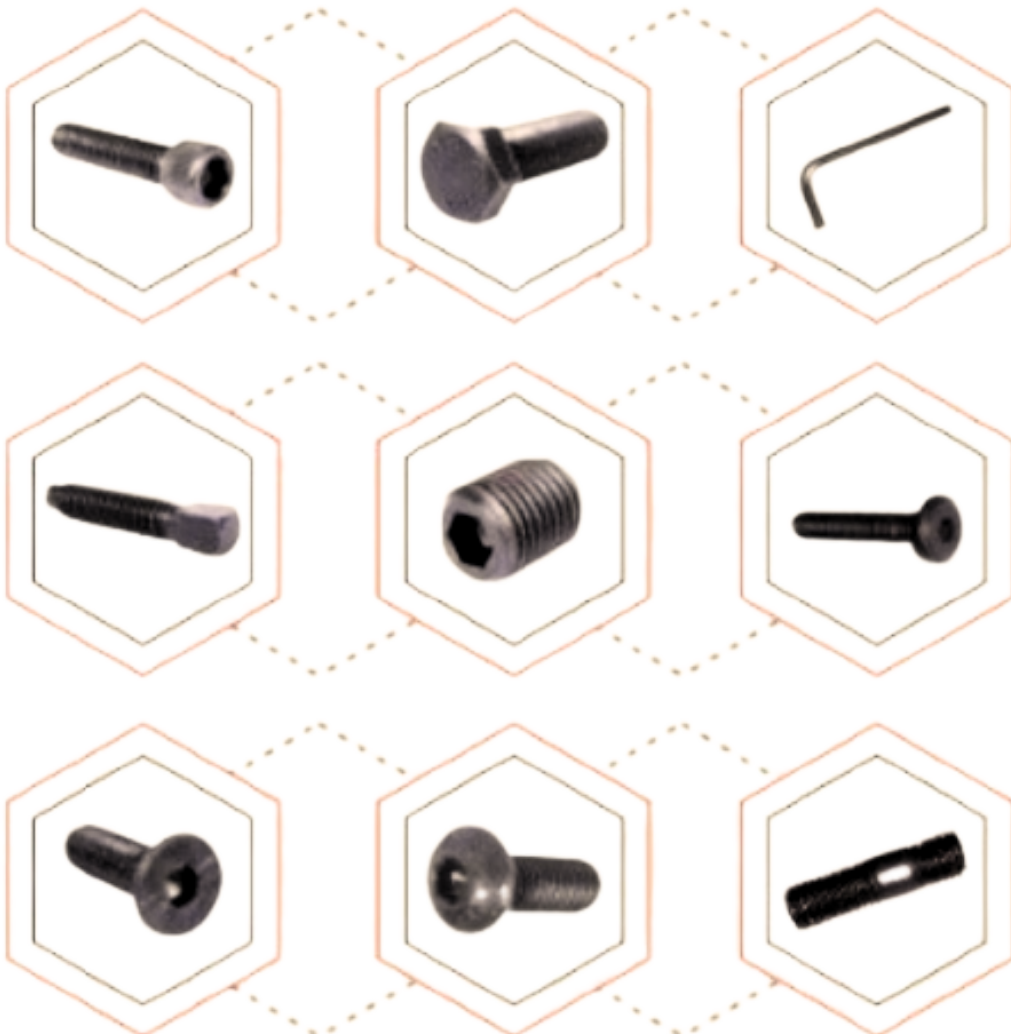


AVIGHAN A. B. STEELS PRIVATE LIMITED

AVIGHAN A.B STEELS PVT LTD

A trusted name in fasteners
Since 1964

AN ISO 9001: 2015 VERIFIED COMPANY





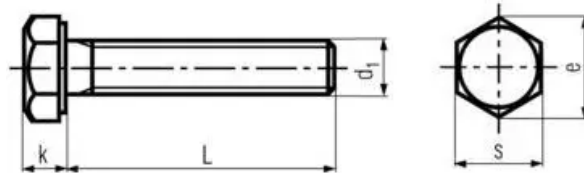
ABOUT COMPANY:

Avighan A.B. Steels, formerly recognized as A.B. Steels Works, is an esteemed industry leader with a longstanding presence since 1964. Our company was established by the late Sh. Ram Murti Sethi, we take immense pride in our extensive experience, unwavering dedication to quality, and broad range of products. At Avighan A.B. Steels, we endeavor to become your trusted and preferred destination for fulfilling all your fastener requirements. Ab Steels Pvt Ltd initiated a venture to produce diverse fasteners. Although the company initially operated on a small scale, it has since expanded its operations significantly.

OUR MISSION:

The main mission of the company is to ensure continued development of a company with a global reach, capable of penetrating each market within that reach and producing steady growth over the long term, fuelled by a constant flow of solutions that provide innovative answers for customers.

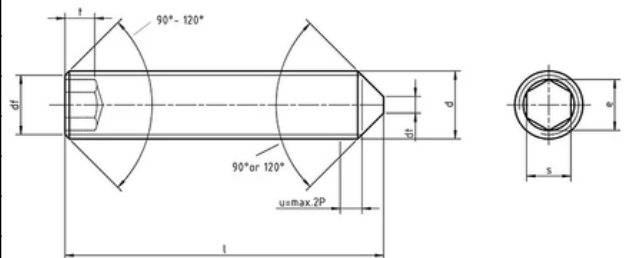
DIMENSIONS OF HEX SCREWS:



NomSize	PITCH	Major Dia		P.C. Dia		Flate to flat		Head Thk.	
		Min	Max.	Min	Max	Min	Max	Min	Max
		Thd .		Tol. Class Is: 4218-6g		S		K	
MS	0.80	4.826	4.976	4.361	4.4S6	7.78	8.00	3.3S	3.6S
M6	1.00	5.794	5.974	5.212	5.324	9.78	10.00	3.8S	4.1S
MS	1.2S	7.760	7.972	7.042	7.160	12.73	13.00	5.1S	5.4S
M10	1.50	9.732	9.968	8.862	8.994	15.73	16.00	6.22	6.5B
M12	1.75	11.701	11.966	10.679	10.829	17.73	18.00	7.32	7.68
M14	2.00	13.682	13.962	12.503	12.663	20.67	21.00	8.62	8.98
M16	2.00	15.682	15.962	14.503	14.663	23.67	24.00	9.82	10.18

SOCKET SET SCREW

Thread Size	Type	w
		Alf Norn
4	SA	1/16
2	BA	3/32
0	BA	1/B
1/8	BSW/BSF	1/16
S/32	BSW/BSF	S/64
3/16	BSW/BSF	3/32
1/14	BSW/BSF	1/B
S/16	BSW/BSF	S/32
3/B	BSW/BSF	3/16
1/2	BSW/BSF	1/4
5/B	BSW/BSF	5/16
3/4	BSW/BSF	3/B

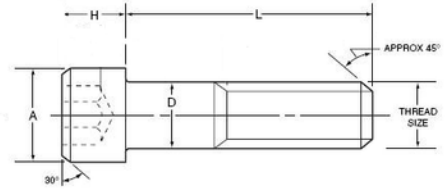
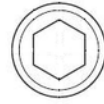


A Trusted Name In Fasteners

Metric Series - M3 - M20 = Upto 150 mm Length

Notes :

- 1 The screws will generally conform to IS:2269, ISO 4762. DIN: 912
2. Threads will conform to class 6g
- 3 All dimensions are in millimeters



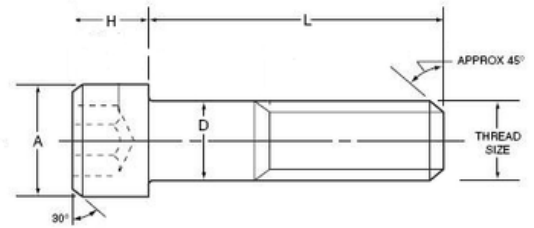
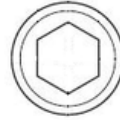
SOCKET HEAD CAP SCREW

Thread Size	M3	M4	M5	M6	M8	M10	M12	(M14)	M16	(M18)	M20
A Max.	s.s	7.0	B.S	10.0	13.0	16.0	18.0	21.0	24.0	27.0	30.0
F Min.	1.S	2.0	2.S	3.0	4.0	s.o	6.0	7.0	8.0	9.0	10.0
H Max.	3.0	4.0	s.o	6.0	8.0	10.0	12.0	14.0	16.0	18.0	20.0
W Nom.	2.S	3.0	4.0	S.O	6.0	B.O	10.0	12.0	14.0	14.0	17.0

Inch Series - BSW/BSF (upto 6')

Notes :

The screws will generally conform to BS : 2470

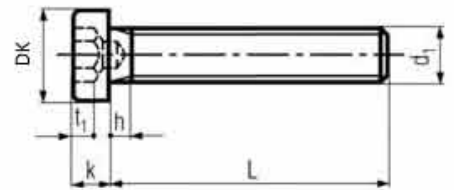


SOCKET HEAD CAP SCREW

Thread Size	1/8	3/16	1/4	5/16	3/8	7/16	1/2	5/8	3/4	7/8	1
Type	BSW	BSW/BSF	BSW/BSF	BSW/BSF	BSW/BSF	BSW/BSF	BSW/BSF	BSW/BSF	BSW/BSF	BSW/BSF	BSW/BSF
rn. (BSW/BSF)	40 /	24 / 32	20 / 26	18 / 22	16 / 20	14 / 18	12 / 16	11 / 14	10 / 12	9 / 11	8 / 10
A Max.	0.219	0.312	0.375	0.437	0.562	0.625	0.750	0.875	1.000	1.125	1.312
F Min.	0.066	0.089	0.120	0.151	0.182	0.213	0.245	0.307	0.370	0.432	0.495
H Max.	0.125	0.187	0.250	0.312	0.375	0.437	0.500	0.625	0.750	0.875	1.000
W Nom.	3/32	5/32	3/16	7/32	5/16	5/16	3/8	1/2	9/16	9/16	5/8

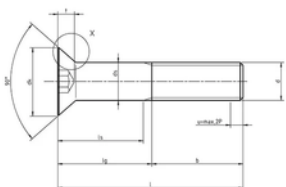
SOCKET LOW HEAD CAP SCREW

Thread Size	M4	M5	M6	M8	M10	M12
A Max.	7.0	8.5	10.0	16.0	16.0	18.0
F Min.	1.48	1.85	2.09	3.36	3.36	4.26
H Max.	2.8	3.5	4.0	6.5	6.5	8.0
W Nom.	3	4	5	6	8	10



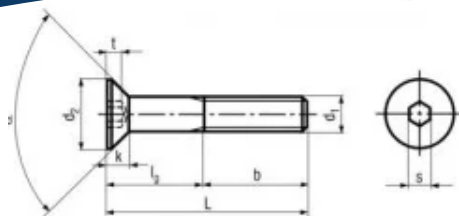
SOCKET COUNTERSUNK HEAD SCREW

Thread Size	M3	M4	M5	M6	M8	M10	M12	M16	M20
A Max.	6.0	8.0	10.0	12.0	16.0	20.0	24.0	30.0	36.0
H Max.	1.7	2.3	2.8	3.3	4.4	5.5	6.5	7.5	8.5
W Nom.	2.0	2.5	3.0	4.0	5.0	6.0	8.0	10.0	12.0



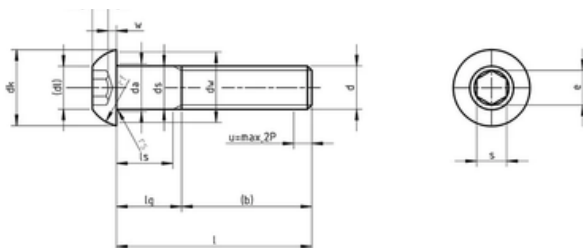


AVIGHAN A.B. STEELS PVT LTD
A trusted name in fasteners
Since 1964



SOCKET COUNTERSUNK HEAD SCREWS

Thread Size	3/16	1/4	5/16	3/8	1/2	5/8	3/4
A Max.	0.356	0.475	0.594	.712	950	1.187	1.425
H Min.	0.085	0.113	1.142	.168	.225	.281	337
W Nom.	3/12	5/32	3/16	7/32	5/16	3/8	3/8



SOCKET BUTTON HEAD CAP SCREWS

Thread Size	M3	M4	M5	M6	MB	M10	M12
A Max.	5.70	7.60	9.50	10.50	14.00	17.5	21.00
H Min.	1.65	2.20	2.75	3.30	4.40	5.50	6.60
W Nom.	2.0	2.5	3.0	4.0	5.0	6.0	8.0

STANDARD THREADS INCH

Dia Inch	BSW	BSF	UNC	UNF
1/16	60			
3/32	48			
7/64	40			
1/8	40			
5/32	32			
3/16	24			
7/32	24			
1/4	20	26	20	28
9/32		26		
5/16	18	22	18	24
3/8	16	20	16	24
7/16	14	18	14	20
1/2	12	16	13	20
9/16	12	16	12	18
5/8	11	14	11	18
11/16	11	14		
3/4	10	12	10	16
13/16	10	12		
7/8	9	11	9	14
15/16	9			
1	8	1n	R	14

STANDARD THREADS MM

Dia MM	Pitch Coarse	Pitch Fine
1.6	0.35	
1.8	0.35	
2	0.4	
2.2	0.45	
2.5	0.45	
3	0.5	
3.5	0.6	
4	0.7	26
4.5	0.75	26
5	0.8	22
6	1.M	20
7	1.M	
8	1.25	1.M
10	1.5	1.25
12	1.75	1.25
14	2.M	1.5
16	2.M	1.5
18	2.5	1.5
20	2.5	1.5
22	2.5	1.5
24	3.M	2.M
30	3.5	2.M

AVIGHAN A. B. STEELS PRIVATE LIMITED

C-139, Phase-V, Focal Point, Ludhiana-141 010 (India) PB. Tel.: 91-161-2672786, 2670786, 5069111
Cell: 98142-08060, 98764-63444
E-mail: absteel1965@yahoo.co.in Website: www.absteelworks.com

Toll Free No.: 1800 180 0065